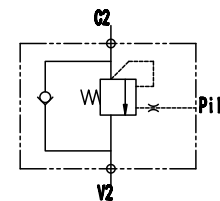


VBCD SAE-3VIE单向平衡阀

SINGLE OVERCENTER VALVE



应用材料/MATERIAL EMPLOYED

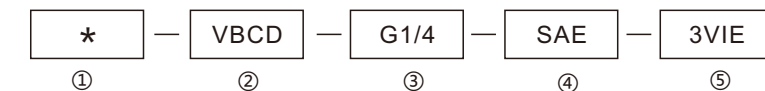
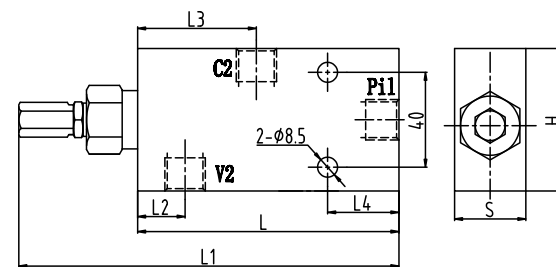
阀体/BODY: 钢/Steel
 阀芯/VALVES: 强化硬质钢/Hardened Steel
 密封/SEALS: 丁腈胶/NBR

适用工作环境/OPERATIONAL RANGE

安装/MOUNTING
 按需/as preferred

温度/TEMPERATURES

理想工作温度: +40°C~+70°C/Ideal operating range between +40°C and +70°C
 最高工作温度: +90°C/Max operating temperature +90°C
 最低/最高环境温度: -20°C~+60°C/ Min/Max environment temps -20°C and +60°C



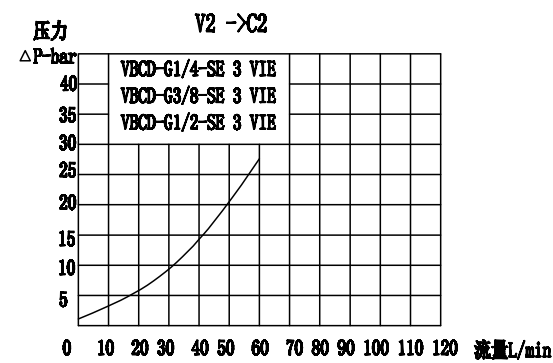
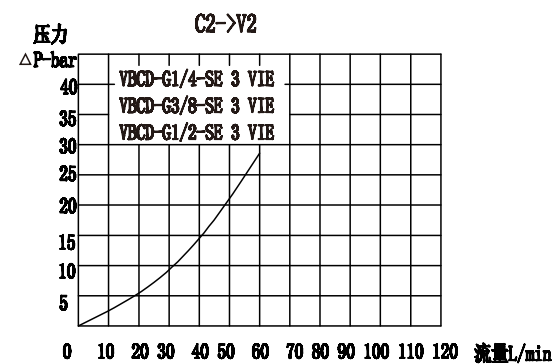
- ① 材料/Material: A: 铝/aluminium 空白: 碳钢/Carbon steel
- ② 液控单平衡阀系列代号/single overcenter valve series code: VBCD-SAE-3VIE型/VBCD-SAE-3VIE type
- ③ 连接螺纹尺寸/connection thread dimension: BBSP
- ④ 单向平衡阀/ The Single overcenter valves
- ⑤ 3油口/ 3 Ways

型号 /TYPE	最大流量 (L/min)	最大压力 (bar)		先导比 (pilot ratio)	V2 C2	P11
		钢 /steel	铝 /aluminium			
VBCD-G1/4-SAE-3VIE	20	350	210	4.5:1	G1/4	G1/4
VBCD-G3/8-SAE-3VIE	40				G3/8	G1/4
VBCD-G1/2-SAE-3VIE	60				G1/2	G1/4

型号 /TYPE	L	L1	L2	L3	L4	H	S
VBCD-G1/4-SAE-3VIE	110	150	20	50	25	60	30
VBCD-G3/8-SAE-3VIE	110	150	20	50	25	60	30
VBCD-G1/2-SAE-3VIE	110	150	20	50	25	65	35

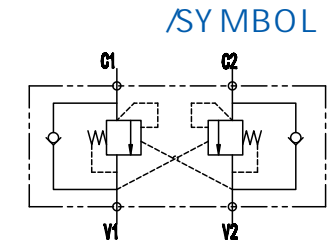
平衡阀是用来控制执行机构在一个方向(单平衡)或两个方向(双平衡)的停止和运动。

The overcenter valves are employed to control the block and the motion of an actuators in one direction(single overcenter valves)or in both the directions(dual overcenter valves)



VBCD-DE A双向平衡阀

DOUBLE SINGLE OVERCENTER VALVE



应用材料/MATERIAL EMPLOYED

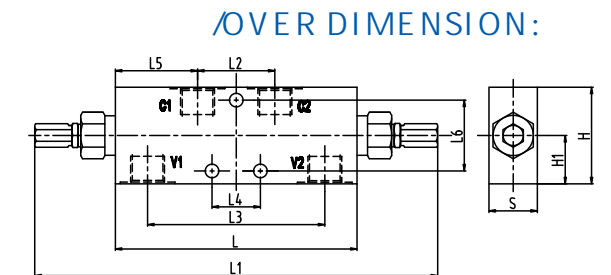
阀体/BODY: 钢/Steel
 阀芯/VALVES: 强化硬质钢/Hardened Steel
 密封/SEALS: 丁腈胶/NBR

适用工作环境/OPERATIONAL RANGE

安装/MOUNTING
 按需/as preferred

温度/TEMPERATURES

理想工作温度: +40°C~+70°C/Ideal operating range between +40°C and +70°C
 最高工作温度: +90°C/Max operating temperature +90°C
 最低/最高环境温度: -20°C~+60°C/ Min/Max environment temps -20°C and +60°C



- ① 材料/Material: A: 铝/aluminium 空白: 碳钢/Carbon steel
- ② 液控平衡阀系列代号/ Overcenter valve series code: VBCD-DE A型/VBCD-DE A type
- ③ 连接螺纹尺寸/connection thread dimension: BBSP
- ④ 双向平衡阀/Double overcentre valves

型号 /TYPE	最大流量 (L/min)	最大压力 (bar)		先导比 (pilot ratio)	V1-V2 C1-C2
		钢 /steel	铝 /aluminium		
VBCD-G1/4-DE A	20	350	210	4.5:1	G1/4
VBCD-G3/8-DE A	40				G3/8
VBCD-G1/2-DE A	60				G1/2

型号 /TYPE	L	L1	L2	L3	L4	L5	L6	H1	H	S
VBCD-G1/4-DE A	150	250	50	110	30	50	44	30	60	30
VBCD-G3/8-DE A	150	250	50	110	30	50	44	30	60	30
VBCD-G1/2-DE A	150	250	50	110	30	50	44	30	65	35

平衡阀是用来控制执行机构在一个方向(单平衡)或两个方向(双平衡)的停止和运动。

The overcenter valves are employed to control the block and the motion of an actuators in one direction(single overcenter valves)or in both the directions(dual overcenter valves)

FLOW DIAGRAM

